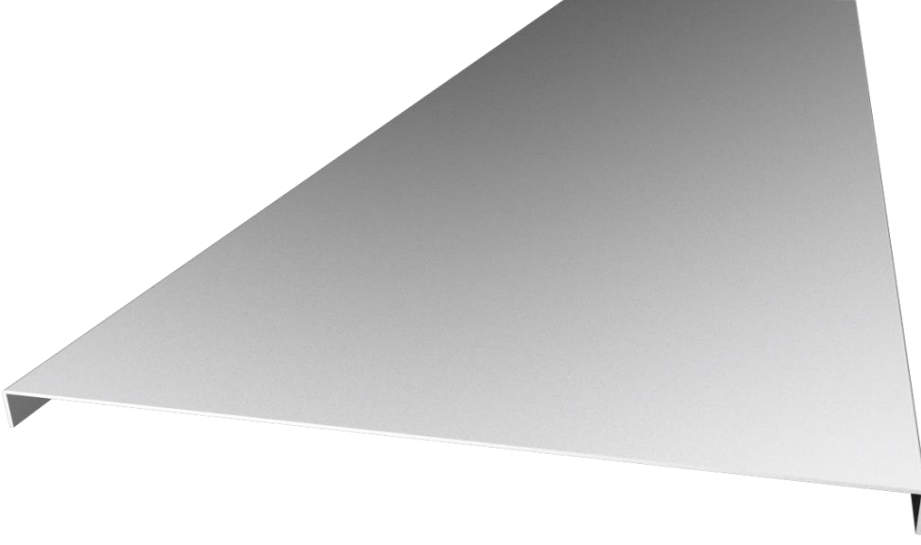


---

# IMERA METAL

---

Cable Management Systems



## CC SERISI

CABLE TRAYS AND LADDERS COVERS

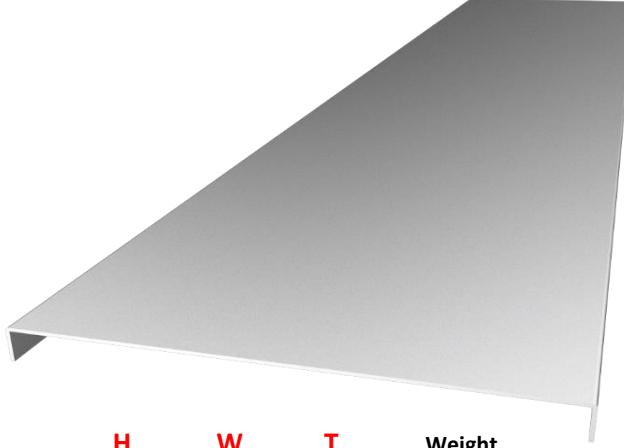
KABLO KANALI VE MERDİVENİ KAPAĞI

## Kablo Kanalı ve Merdiveni Kapağı

## Cable Tray and Ladder Cover

Side Height

**15**



MODEL CODE	H (mm)	W (mm)	T (mm)	Weight (kg/m)
CC 5	15	50	0.80	0.50
CC 10	15	100	0.80	0.82
CC 15	15	150	1.00	1.41
CC 20	15	200	1.00	1.81
CC 25	15	250	1.00	2.28
CC 30	15	300	1.20	3.11
CC 40	15	400	1.20	4.05
CC 50	15	500	1.20	4.99
CC 60	15	600	1.20	5.93

**H:** Height  
**W:** Width  
**T:** Thickness

\*PG: Steel, Pregalvanised ISO EN 10346 (TS 822).

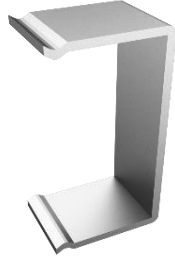
\*HDG: Steel, Hot Dip Galvanised EN ISO 1461).

\*Epoxy: Electrostatic Powder Coated.(on request 50 different color.)

PG	HDG	EPOXY
+	+	+

## Kapak Tutucu 1

## Cover Clamp 1



MODEL CODE	H (mm)	T (mm)	Weight (kg/m)
CT/1 25	25	2.00	0.03
CT/1 35	35	2.00	0.03
CT/1 40	40	2.00	0.03
CT/1 50	50	2.00	0.03
CT/1 60	60	2.00	0.04
CT/1 75	75	2.00	0.04
CT/1 80	80	2.00	0.04
CT/1 10	100	2.00	0.05

**H:** Height  
**W:** Width  
**T:** Thickness

\*PG: Steel, Pregalvanised ISO EN 10346 (TS 822).

\*HDG: Steel, Hot Dip Galvanised EN ISO 1461).

\*Epoxy: Electrostatic Powder Coated.(on request 50 different color.)

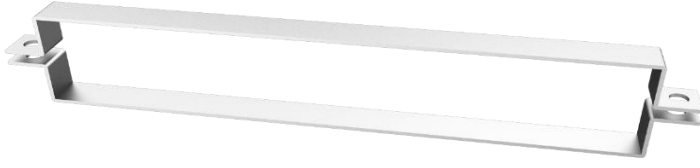
PG	HDG	EPOXY
+	+	+

## Kapak Tutucu 2

## Cover Clamp 2

Side Height

**15**



**H:** Height  
**W:** Width  
**T:** Thickness

MODEL CODE	H (mm)	T (mm)	Weight (kg/m)
CT/2 25	25	2.00	0.16
CT/2 35	35	2.00	0.16
CT/2 40	40	2.00	0.16
CT/2 50	50	2.00	0.17
CT/2 60	60	2.00	0.17
CT/2 75	75	2.00	0.17
CT/2 80	80	2.00	0.13
CT/2 10	100	2.00	0.13

\*PG: Steel, Pregalvanised ISO EN 10346 (TS 822).

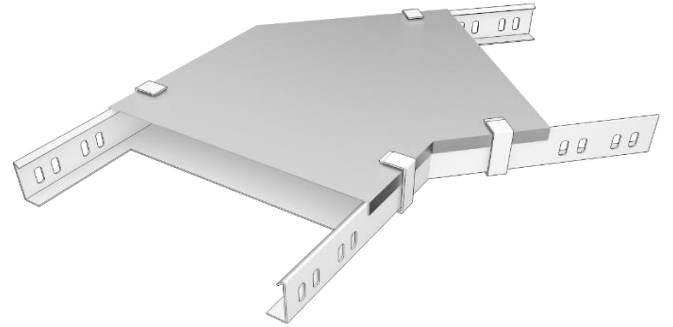
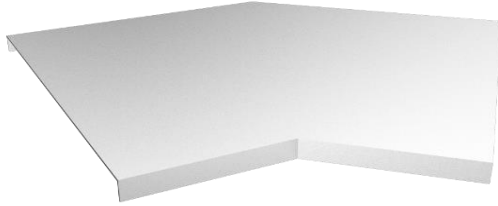
\*HDG: Steel, Hot Dip Galvanised EN ISO 1461).

\*Epoxy: Electrostatic Powder Coated.(on request 50 different color.)

PG	HDG	EPOXY
+	+	+

## 45° Yatay Dönüş Elemanı Kapağı

## 45° Horizontal Bend Cover



**H:** Height  
**W:** Width  
**T:** Thickness

MODEL CODE	H (mm)	W (mm)	T (mm)	Weight (kg/m)
BC45 10	15	100	1.20	0.46
BC45 15	15	150	1.20	0.65
BC45 20	15	200	1.50	1.10
BC45 25	15	250	1.50	1.43
BC45 30	15	300	1.50	1.80
BC45 40	15	400	2.00	3.56
BC45 50	15	500	2.00	4.94
BC45 60	15	600	2.00	6.54

\*PG: Steel, Pregalvanised ISO EN 10346 (TS 822).

\*HDG: Steel, Hot Dip Galvanised EN ISO 1461).

\*Epoxy: Electrostatic Powder Coated.(on request 50 different color.)

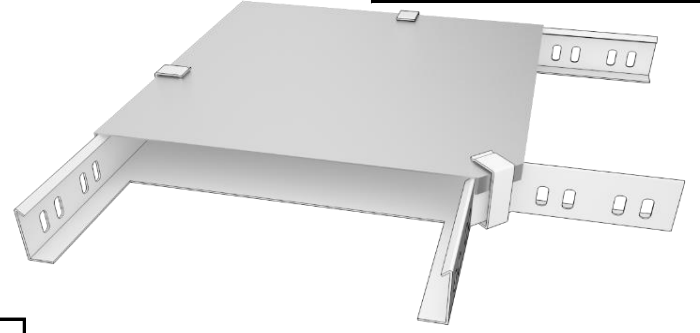
PG	HDG	EPOXY
+	+	+

## 90° Yatay Dönüş Elemanı Kapağı

## 90° Horizontal Bend Cover

Side Height

**15**



MODEL CODE	H (mm)	W (mm)	T (mm)	Weight (kg/m)
BC90 10	15	100	1.20	0.26
BC90 15	15	150	1.20	0.43
BC90 20	15	200	1.50	0.82
BC90 25	15	250	1.50	1.17
BC90 30	15	300	1.50	1.56
BC90 40	15	400	2.00	3.39
BC90 50	15	500	2.00	5.00
BC90 60	15	600	2.00	6.93

**H:** Height  
**W:** Width  
**T:** Thickness

\*PG: Steel, Pregalvanised ISO EN 10346 (TS 822).

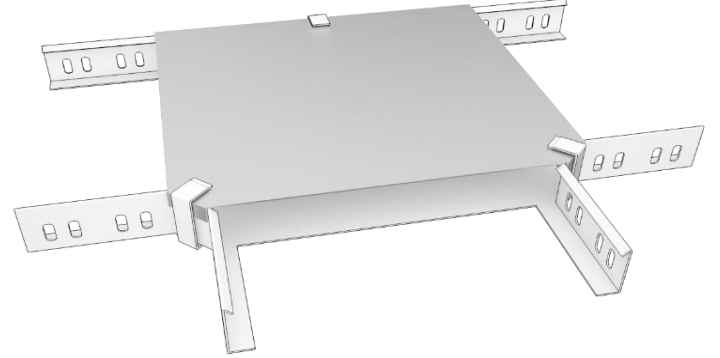
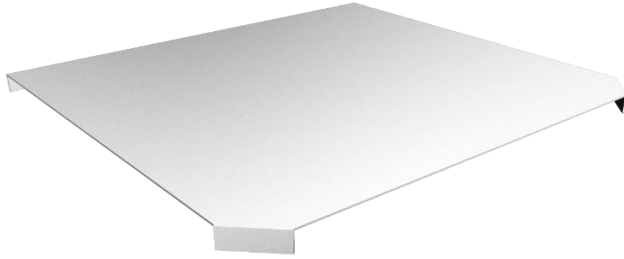
\*HDG: Steel, Hot Dip Galvanised EN ISO 1461).

\*Epoxy: Electrostatic Powder Coated.(on request 50 different color.)

PG	HDG	EPOXY
+	+	+

## T Yatay Dönüş Elemanı Kapağı

## Tee Horizontal Bend Cover



MODEL CODE	H (mm)	W (mm)	T (mm)	Weight (kg/m)
BCT 10	15	100	1.20	0.31
BCT 15	15	150	1.20	0.50
BCT 20	15	200	1.50	0.93
BCT 25	15	250	1.50	1.29
BCT 30	15	300	1.50	1.71
BCT 40	15	400	2.00	3.64
BCT 50	15	500	2.00	5.31
BCT 60	15	600	2.00	7.29

**H:** Height  
**W:** Width  
**T:** Thickness

\*PG: Steel, Pregalvanised ISO EN 10346 (TS 822).

\*HDG: Steel, Hot Dip Galvanised EN ISO 1461).

\*Epoxy: Electrostatic Powder Coated.(on request 50 different color.)

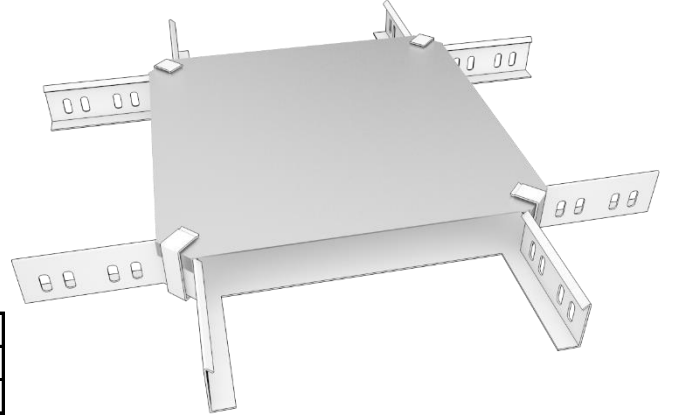
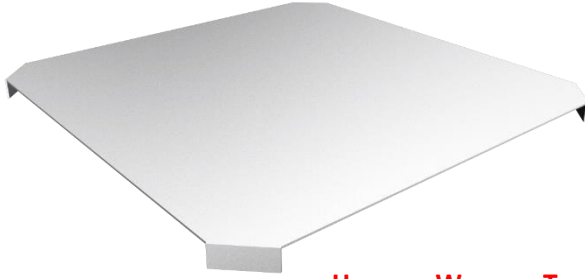
PG	HDG	EPOXY
+	+	+

## Dörtlü Kanal Dönüş Eleman Kapağı

## Crossing Horizontal Bend Cover

Side Height

**15**



**H:** Height  
**W:** Width  
**T:** Thickness

MODEL CODE	H (mm)	W (mm)	T (mm)	Weight (kg/m)
BCC 10	15	100	1.20	0.37
BCC 15	15	150	1.20	0.58
BCC 20	15	200	1.50	1.05
BCC 25	15	250	1.50	1.43
BCC 30	15	300	1.50	1.88
BCC 40	15	400	2.00	3.91
BCC 50	15	500	2.00	5.63
BCC 60	15	600	2.00	7.67

\*PG: Steel, Pregalvanised ISO EN 10346 (TS 822).

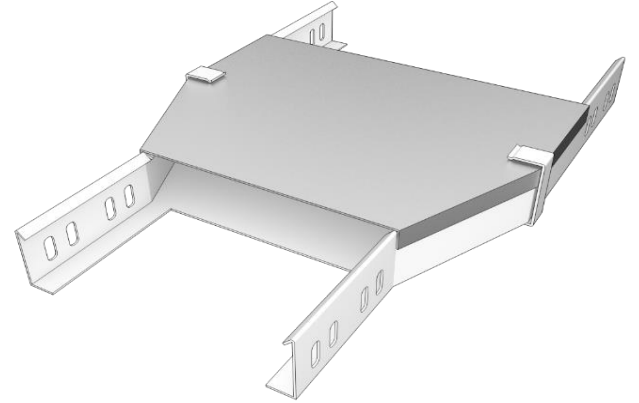
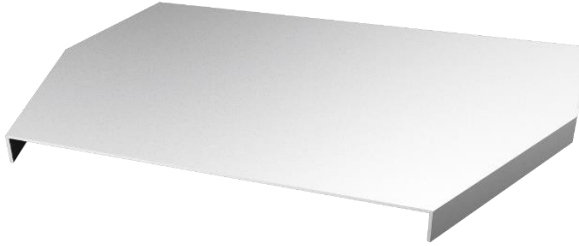
\*HDG: Steel, Hot Dip Galvanised EN ISO 1461).

\*Epoxy: Electrostatic Powder Coated.(on request 50 different color.)

PG	HDG	EPOXY
+	+	+

## Ortadan Redüksiyon Kapağı

## Middle Reducer Cover



**H:** Height  
**W:** Width  
**T:** Thickness

MODEL CODE	H (mm)	W (mm)	T (mm)	Weight (kg/m)
RMC 10	15	100-150	1.50	0.61
RMC 15	15	150-100	1.50	0.85
RMC 20	15	200-100	1.50	1.08
RMC 25	15	250-200	1.50	1.32
RMC 30	15	300-200	1.50	1.55
RMC 40	15	400-300	2.00	2.70
RMC 50	15	500-400	2.00	3.33
RMC 60	15	600-500	2.00	3.96

\*PG: Steel, Pregalvanised ISO EN 10346 (TS 822).

\*HDG: Steel, Hot Dip Galvanised EN ISO 1461).

\*Epoxy: Electrostatic Powder Coated.(on request 50 different color.)

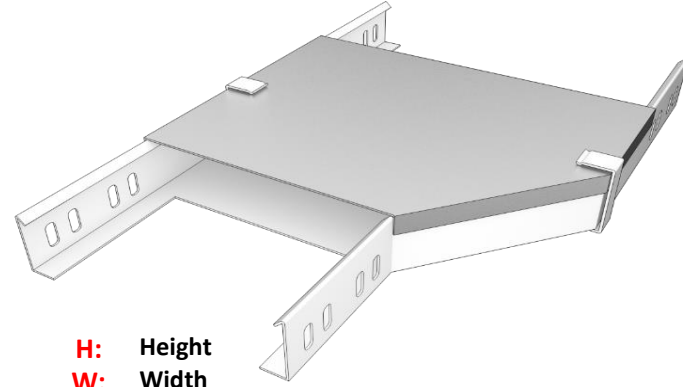
PG	HDG	EPOXY
+	+	+

## Soldan Redüksiyon Kapağı

## Left Reducer Cover

Side Height

**15**



**H:** Height  
**W:** Width  
**T:** Thickness

MODEL CODE	H (mm)	W (mm)	T (mm)	Weight (kg/m)
LRC 10	15	100-150	1.50	0.61
LRC 15	15	150-100	1.50	0.85
LRC 20	15	200-100	1.50	1.08
LRC 25	15	250-200	1.50	1.32
LRC 30	15	300-200	1.50	1.55
LRC 40	15	400-300	2.00	2.70
LRC 50	15	500-400	2.00	3.33
LRC 60	15	600-500	2.00	3.96

\*PG: Steel, Pregalvanised ISO EN 10346 (TS 822).

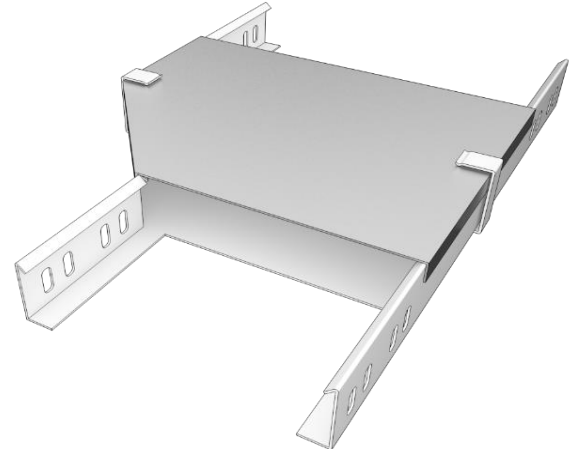
\*HDG: Steel, Hot Dip Galvanised EN ISO 1461).

\*Epoxy: Electrostatic Powder Coated.(on request 50 different color.)

**PG**      **HDG**      **EPOXY**  
+            +            +

## Sağdan Redüksiyon Kapağı

## Right Reducer Cover



**H:** Height  
**W:** Width  
**T:** Thickness

MODEL CODE	H (mm)	W (mm)	T (mm)	Weight (kg/m)
RMC 10	15	100-150	1.50	0.61
RMC 15	15	150-100	1.50	0.85
RMC 20	15	200-100	1.50	1.08
RMC 25	15	250-200	1.50	1.32
RMC 30	15	300-200	1.50	1.55
RMC 40	15	400-300	2.00	2.70
RMC 50	15	500-400	2.00	3.33
RMC 60	15	600-500	2.00	3.96

\*PG: Steel, Pregalvanised ISO EN 10346 (TS 822).

\*HDG: Steel, Hot Dip Galvanised EN ISO 1461).

\*Epoxy: Electrostatic Powder Coated.(on request 50 different color.)

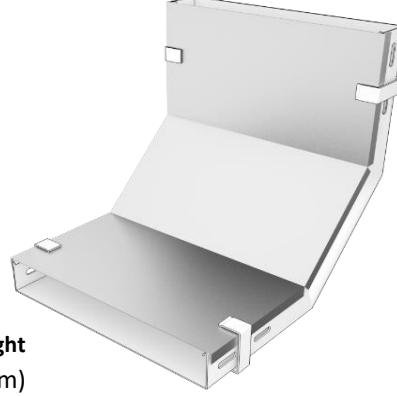
**PG**      **HDG**      **EPOXY**  
+            +            +

## 90° Dikey İç Bükey (Sabit) Kapağı

## 90° Vertical Inside Bend (Stable) Cover

Side Height

**15**



MODEL CODE	H (mm)	W (mm)	T (mm)	Weight (kg/m)
BISC 50	15	50	1.20	0.75
BISC 10	15	100	1.20	1.23
BISC 15	15	150	1.20	1.70
BISC 20	15	200	1.50	2.71
BISC 25	15	250	1.50	3.30
BISC 30	15	300	1.50	3.89
BISC 40	15	400	1.50	5.06
BISC 50	15	500	1.50	6.24
BISC 60	15	600	1.50	7.42

**H:** Height  
**W:** Width  
**T:** Thickness

\*PG: Steel, Pregalvanised ISO EN 10346 (TS 822).

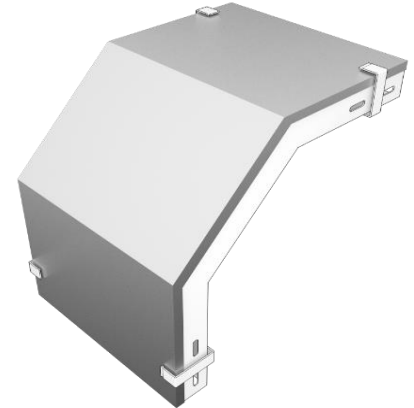
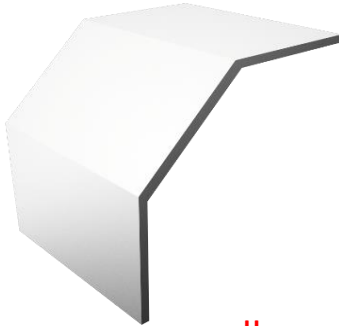
\*HDG: Steel, Hot Dip Galvanised EN ISO 1461).

\*Epoxy: Electrostatic Powder Coated.(on request 50 different color.)

PG	HDG	EPOXY
+	+	+

## 90° Dikey Dış Bükey (Sabit) Kapağı

## 90° Vertical Outside Bend (Stable) Cover



MODEL CODE	H (mm)	W (mm)	T (mm)	Weight (kg/m)
BOSC 50	15	50	1.20	0.75
BOSC 10	15	100	1.20	1.23
BOSC 15	15	150	1.20	1.70
BOSC 20	15	200	1.50	2.71
BOSC 25	15	250	1.50	3.30
BOSC 30	15	300	1.50	3.89
BOSC 40	15	400	1.50	5.06
BOSC 50	15	500	1.50	6.24
BOSC 60	15	600	1.50	7.42

**H:** Height  
**W:** Width  
**T:** Thickness

\*PG: Steel, Pregalvanised ISO EN 10346 (TS 822).

\*HDG: Steel, Hot Dip Galvanised EN ISO 1461).

\*Epoxy: Electrostatic Powder Coated.(on request 50 different color.)

PG	HDG	EPOXY
+	+	+